

LAND ACKNOWLEDGEMENT

Tséhésenéstsestótse (Cheyenne)

Hinóno'eitíít (Arapaho)

Dakǎhóta (Western Dakota)

Dakhóta (Eastern Dakota)

Lakǎhótiyapi (Lakota)

Ndé Kónitsaqáí Gokíyaa (Lipan Apache)

hinono'eino' biito'owu' (Arapaho)

Núu-agma-tuvu-pu (Ute)

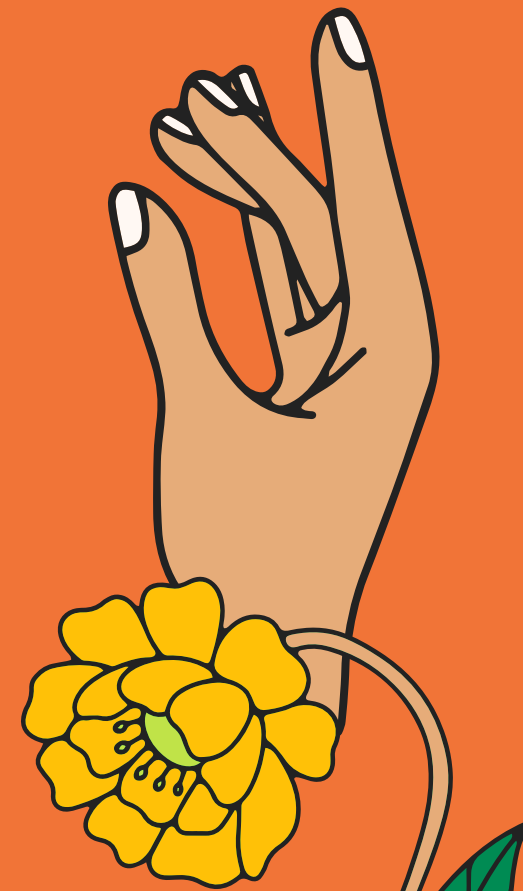
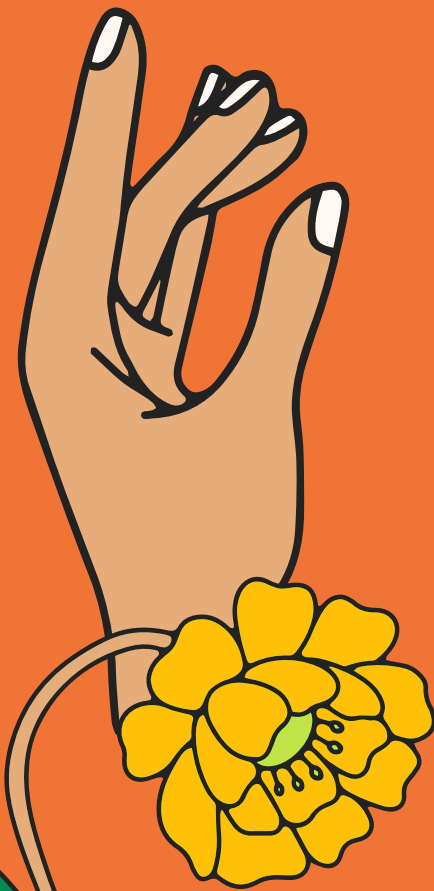
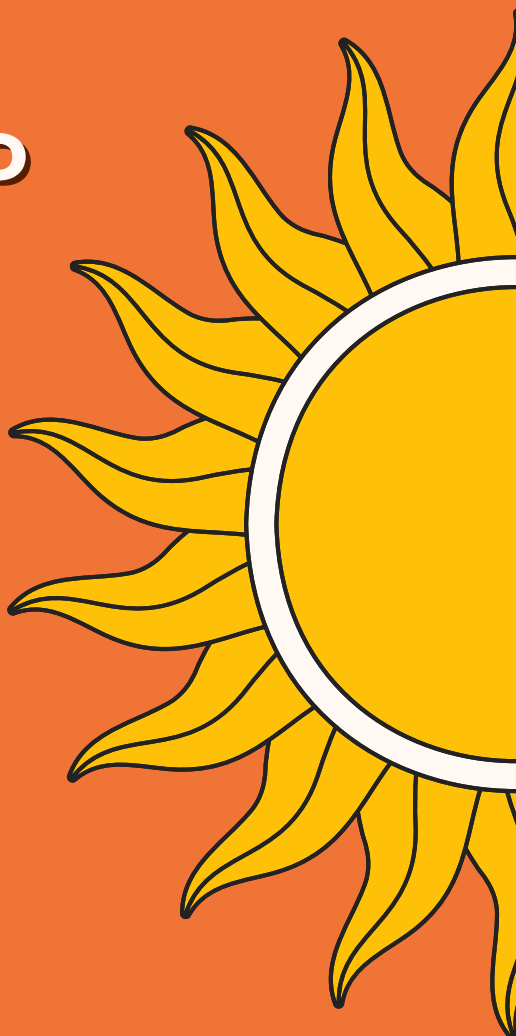
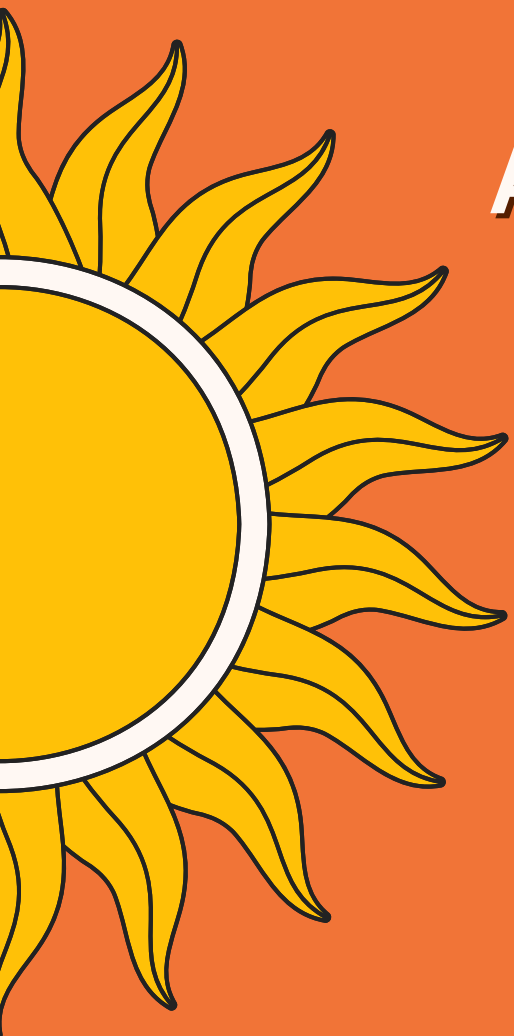
Tsésthó'e (Cheyenne)

chéthi Šakówin



A PUBLIC HEALTH AND PARK AND REC PARTNERSHIP TO ELEVATE YOUTH VOICE AND INCREASE COMMUNITY CAPACITY

I-70 Corridor Communities that Care



SPEAKERS

✦ NICHOLE HARRELL, MACI

Community Mobilizer
at Bennett Park and Recreation District

✦ LIBBY HARRINGTON, MPH

Community Prevention & Policy Specialist
at Adams County Health Department



A Special Thank You



Bennett Park and Rec District
(BPRD)



**I-70 Corridor Communities
That Care**
(I-70 CCTC)



**Tri-County Health
Department**
(TCHD)



Teens for Change
(TFC)

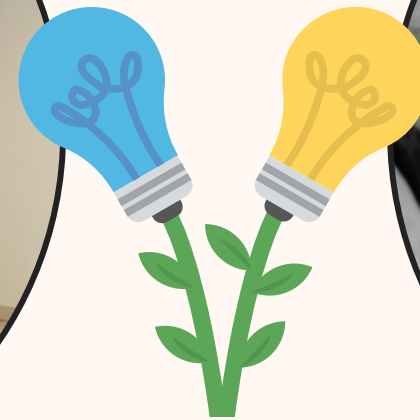
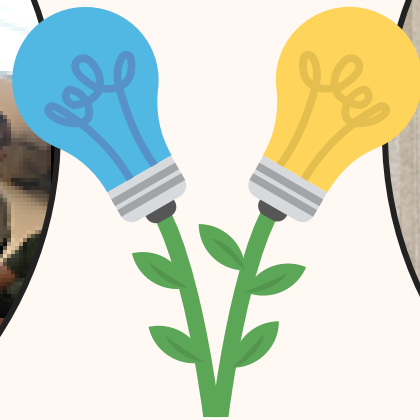


**Colorado Dept of Public
Health and Environment**
(CDPHE)



**Adams County
Health Department**
(ACHD)

OVERVIEW




Collaborating
intentionally

Increase youth
engagement

Systems
change

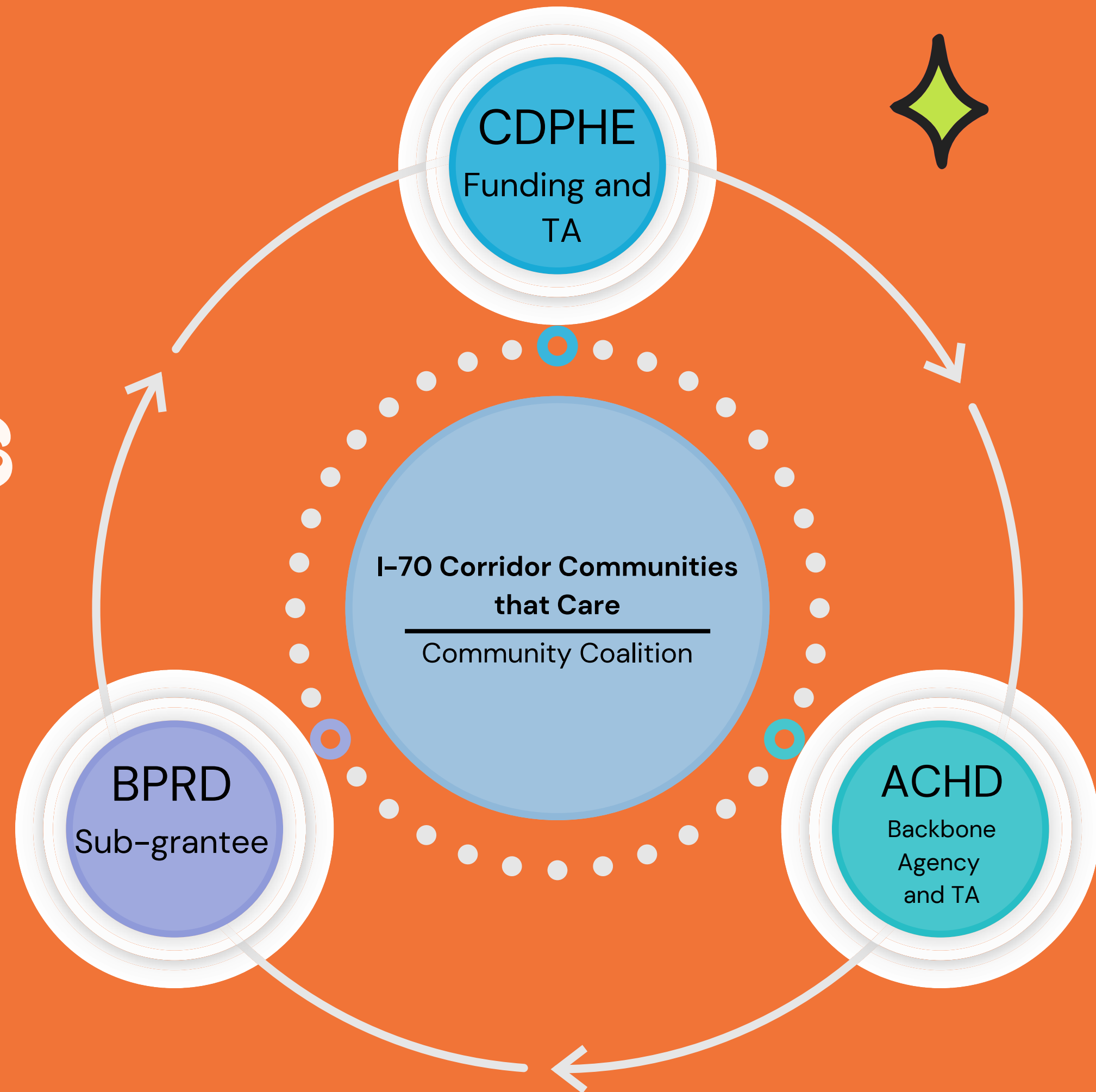


**Who currently engages
youth in their work and
community?**



**Think of a time when
you were engaged as
a young person.**

Creating Partnerships



I-70 CCTC

I-70 Corridor Communities that Care



Teens for Change



SEEKS TO REDUCE PROBLEM BEHAVIORS

through the use of local, regional, and state data.



ADDRESS RISK AND PROTECTIVE FACTORS

by addressing community needs through the implementation of science-based strategies and programs.



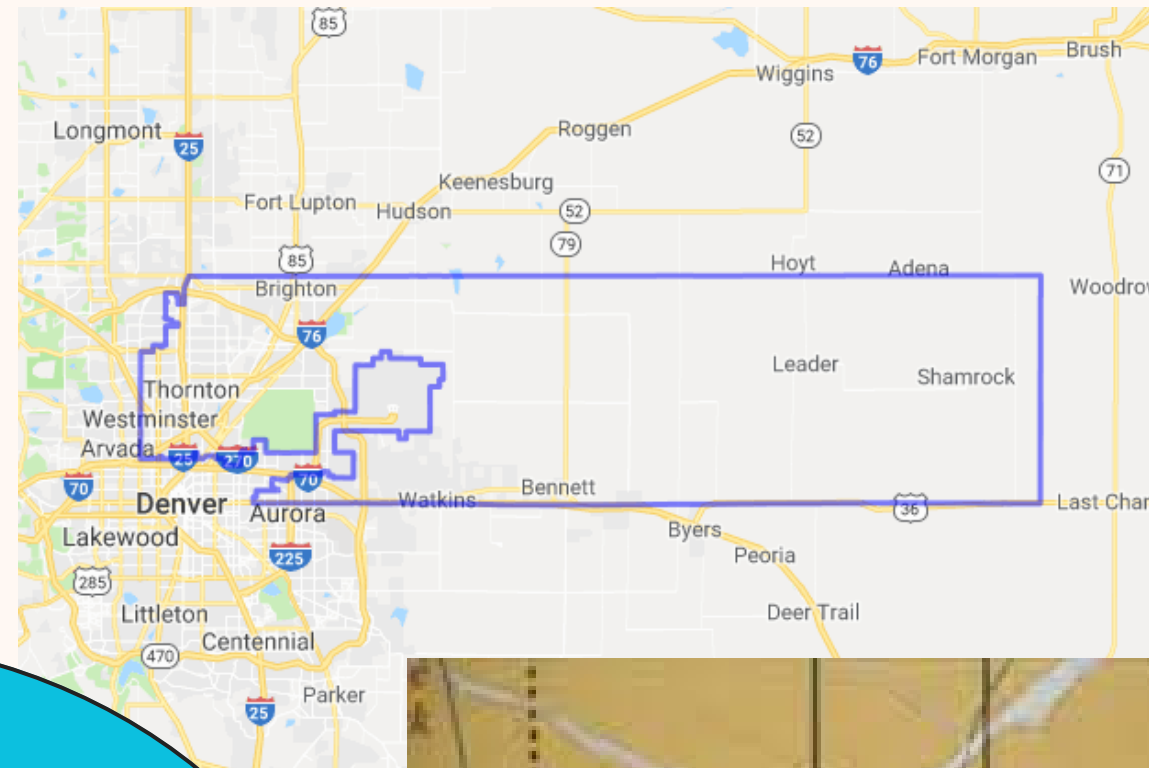
COMMUNITY AT THE FOREFRONT

The community needs to be at the forefront of every decision and action.

Community Profile, Pre-existing Structures, Knowledge, and Factors

Filling the Gaps

Gaps in services and partnerships in community health created a need for community-specific and community-owned service delivery.



Grant Funding

Funding was made available through Communities that Care as an opportunity to fill gaps in the community and expand focus on systems change and prevention.



Social Development Strategy (DS) and Positive Youth Development (PYD)

The lack of positive youth opportunities in the community and youth voice in systems created the opportunity for the introduction of PYD and SDS

Knowledge

Because they have the knowledge, community members serve their community best.

Weaving Youth Engagement into Public Health

**YOUTH
AS EQUAL
PARTNERS**

**POSITIVE
YOUTH
DEVELOPMENT**

**SOCIAL
DEVELOPMENT
STRATEGY**



✦ UNDERSTANDING AND ✦
✦ PRACTICING THE ✦
DIFFERENCE BETWEEN
YOUTH PARTICIPATION
AND YOUTH ENGAGEMENT.

Implementing youth engagement into every step of the process:

**PREPARING
TO ENGAGE
YOUTH**

**DEVELOPING
AN ACTION
PLAN**

**CENTERING
EQUITY**

**EVALUATING
YOUTH
ENGAGEMENT**

**SUSTAINING
YOUTH
ENGAGEMENT**





POSITIVE YOUTH DEVELOPMENT

PYD is an **intentional, prosocial approach** that engages youth within their communities, schools, organizations, peer groups, and families in a manner that is **productive and constructive**; recognizes, utilizes, and enhances young people's **strengths**; and promotes positive outcomes for young people by **providing opportunities, fostering positive relationships, and furnishing the support needed** to build on their leadership strengths.



Social Development Strategy

HEALTHY
BELIEFS
AND CLEAR
STANDARDS
FOR
BEHAVIOR

BONDING

OPPORTUNITIES

SKILLS

RECOGNITION



SDS AND PYD IN PRACTICE





LESSONS LEARNED

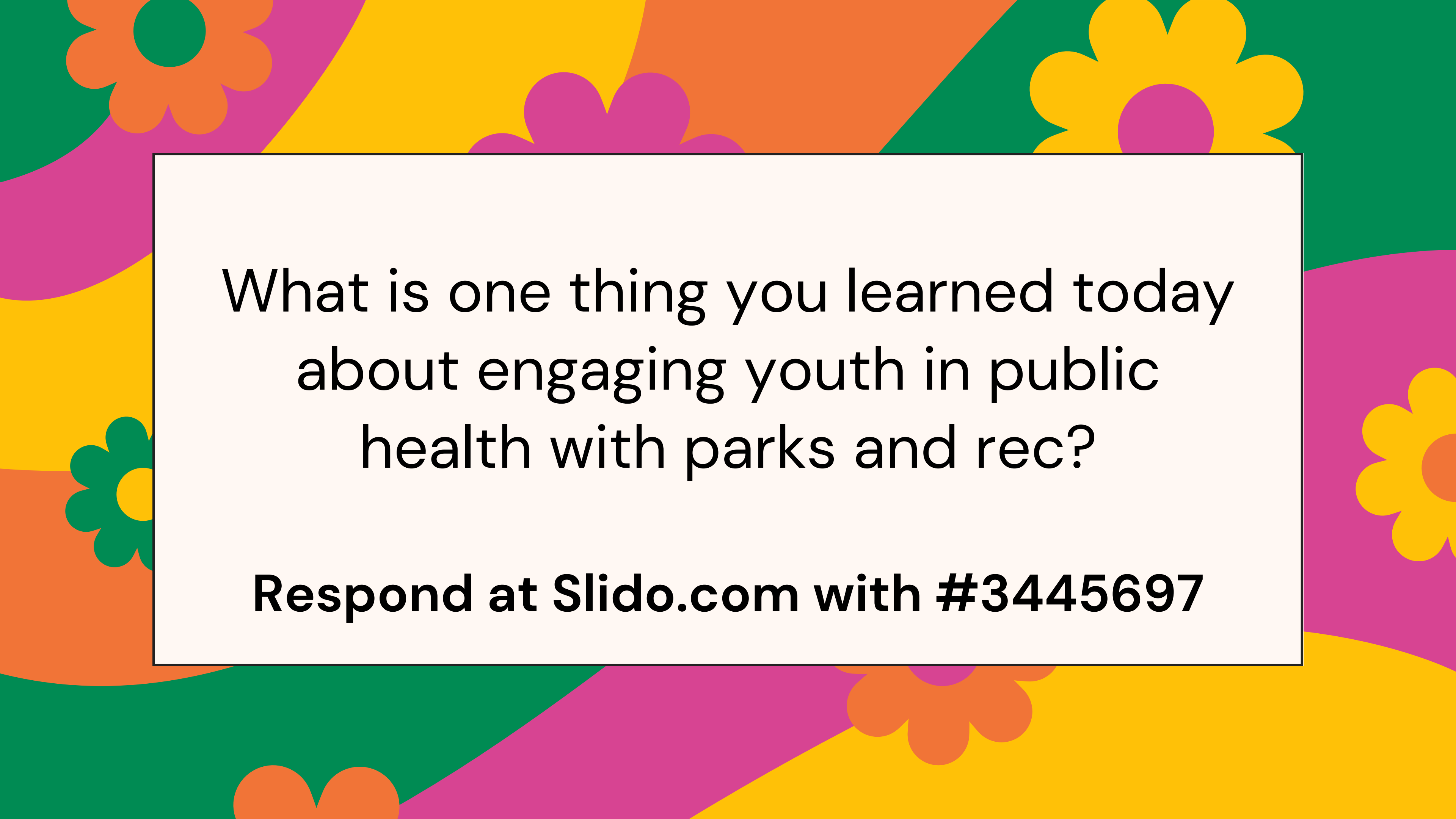
NEXT STEPS

- Equity at the forefront
- Continued recruitment, and of diverse and representative members
- Youth internships
- Increase capacity for youth engagement in other sectors
- Anticipate growth



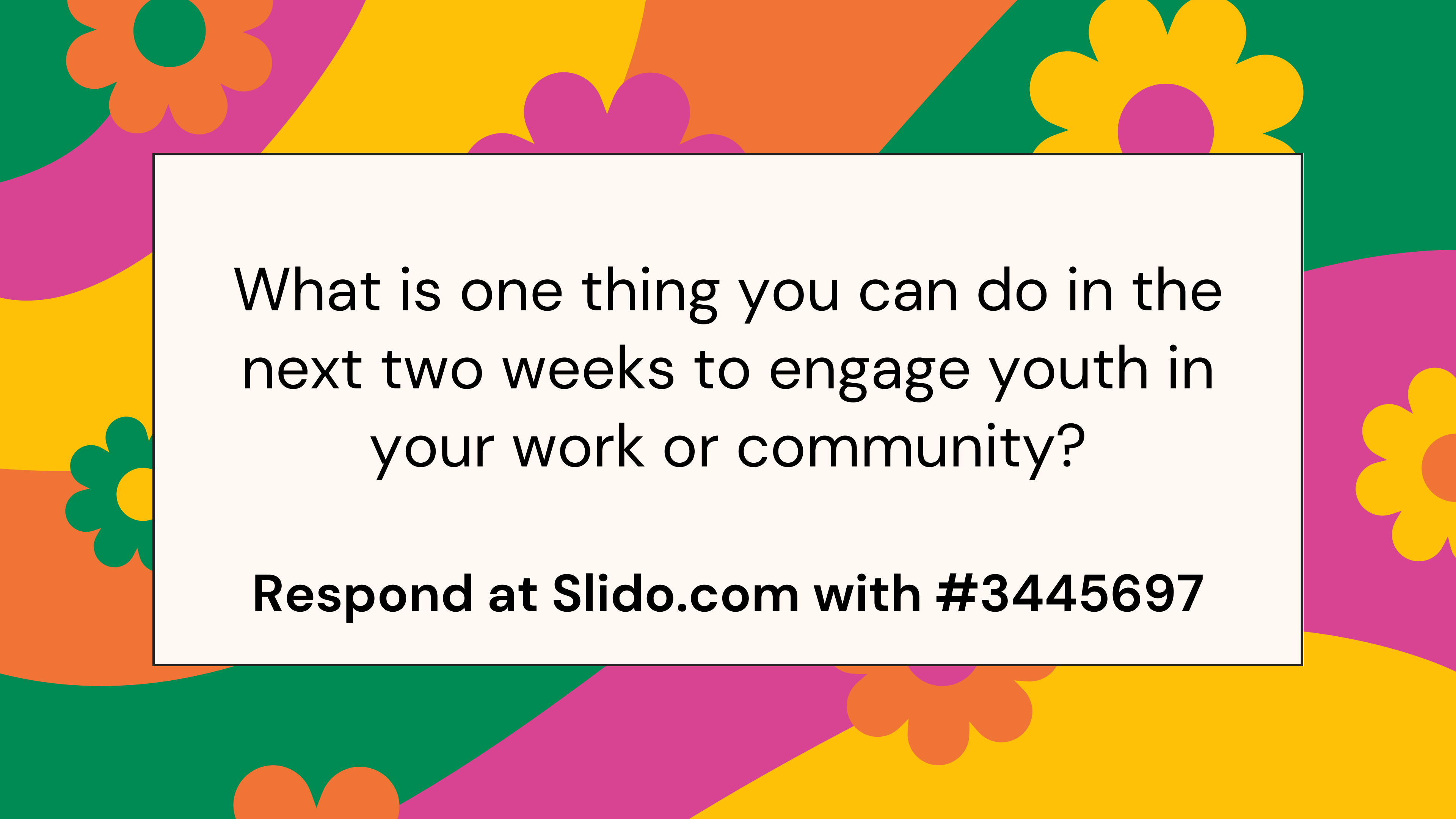


**Respond at Slido.com
with #3445697**



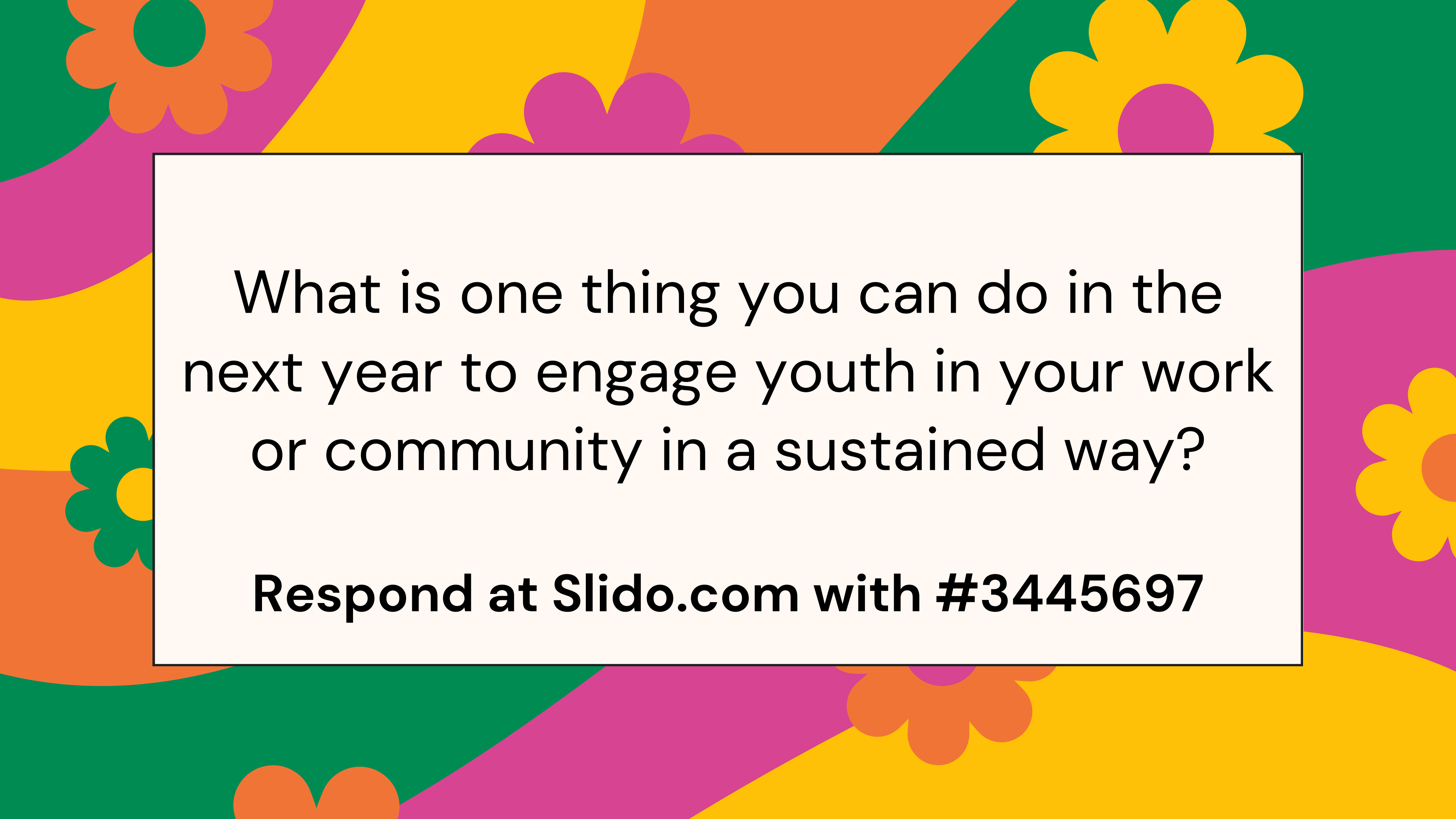
What is one thing you learned today
about engaging youth in public
health with parks and rec?

Respond at Slido.com with #3445697




What is one thing you can do in the
next two weeks to engage youth in
your work or community?

Respond at [Slido.com](https://www.slido.com) with #3445697



What is one thing you can do in the next year to engage youth in your work or community in a sustained way?

Respond at [Slido.com](https://www.slido.com) with #3445697



QUESTIONS?

...or feedback?



LET'S COLLABORATE!

CONTACT US!

✦ NICHOLE HARRELL, MACI

nharrell@bennettrec.org
(000)000-0000

✦ LIBBY HARRINGTON, MPH

eharrington@adcogov.org
(720)200-1657

