

CONTINUUM OF COMPASSION: BALANCING CARE, COMPLIANCE, AND COMMUNITY

04/17/2026

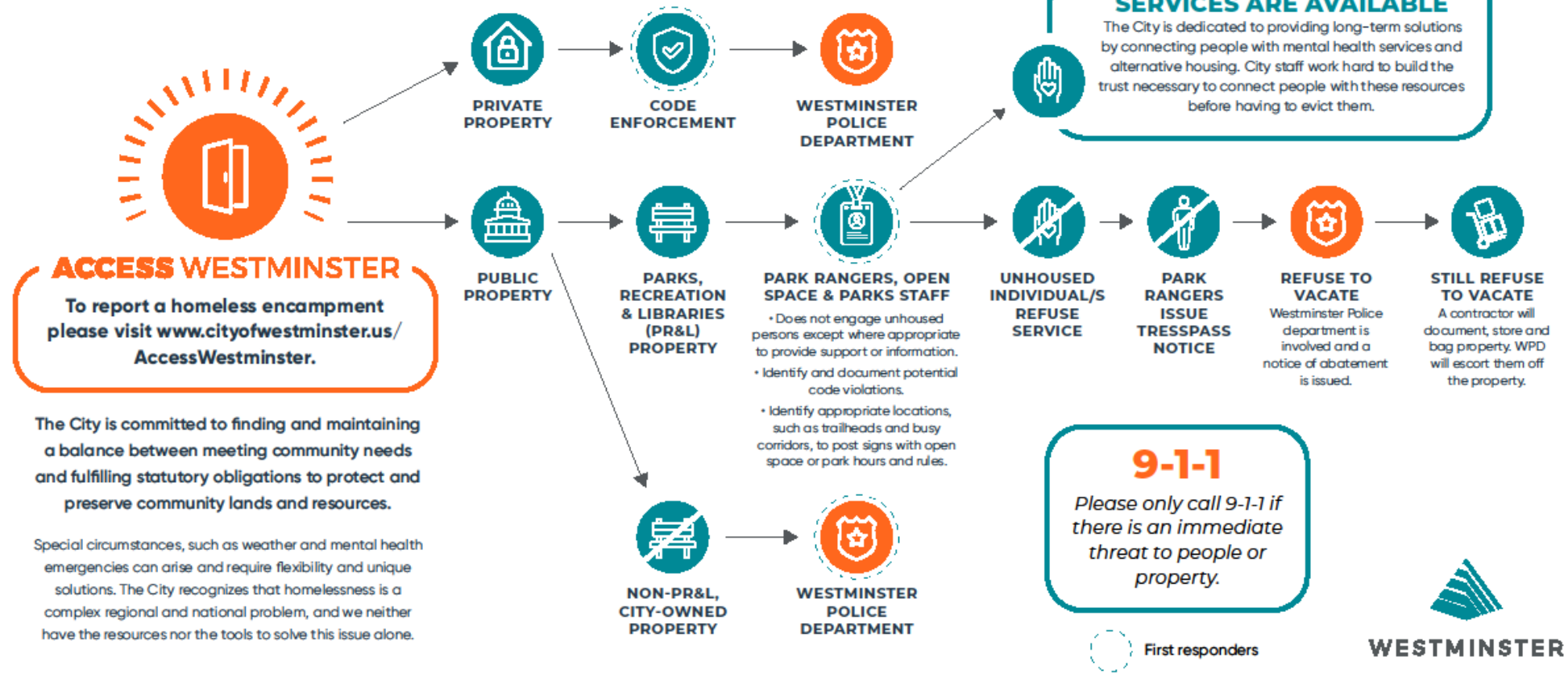
Presented By:

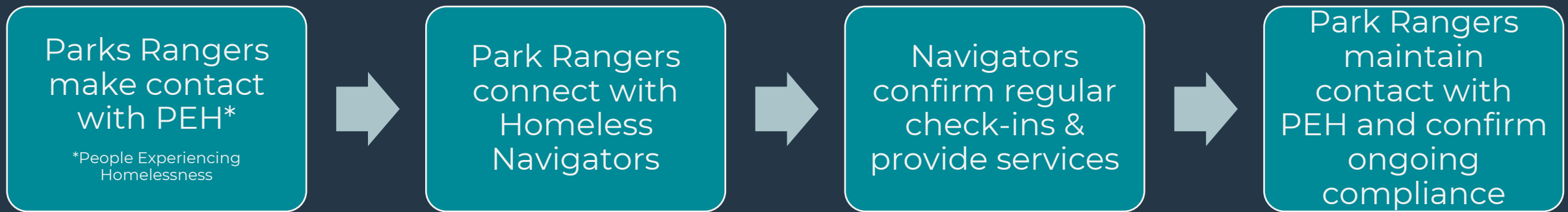
Haley Stephenson, Homeless Navigator, City of Westminster

Lauren O'Neill, Senior Park Ranger, City of Westminster

WHY ENFORCEMENT & HUMAN SERVICES MUST WORK TOGETHER

Continuum of Compassion: ENCAMPMENT PROTOCOLS





HOW COMMUNICATION & REFERRAL SYSTEMS WORK IN PRACTICE

Park Ranger and Navigator Role Clarity



Park Rangers

- Patrol Parks/Open Spaces/Trails
- Referrals to Homeless Navigators
- Enforce Public Safety Ordinances
- Issue Citations and Court Summons
- Community Engagement and Outreach

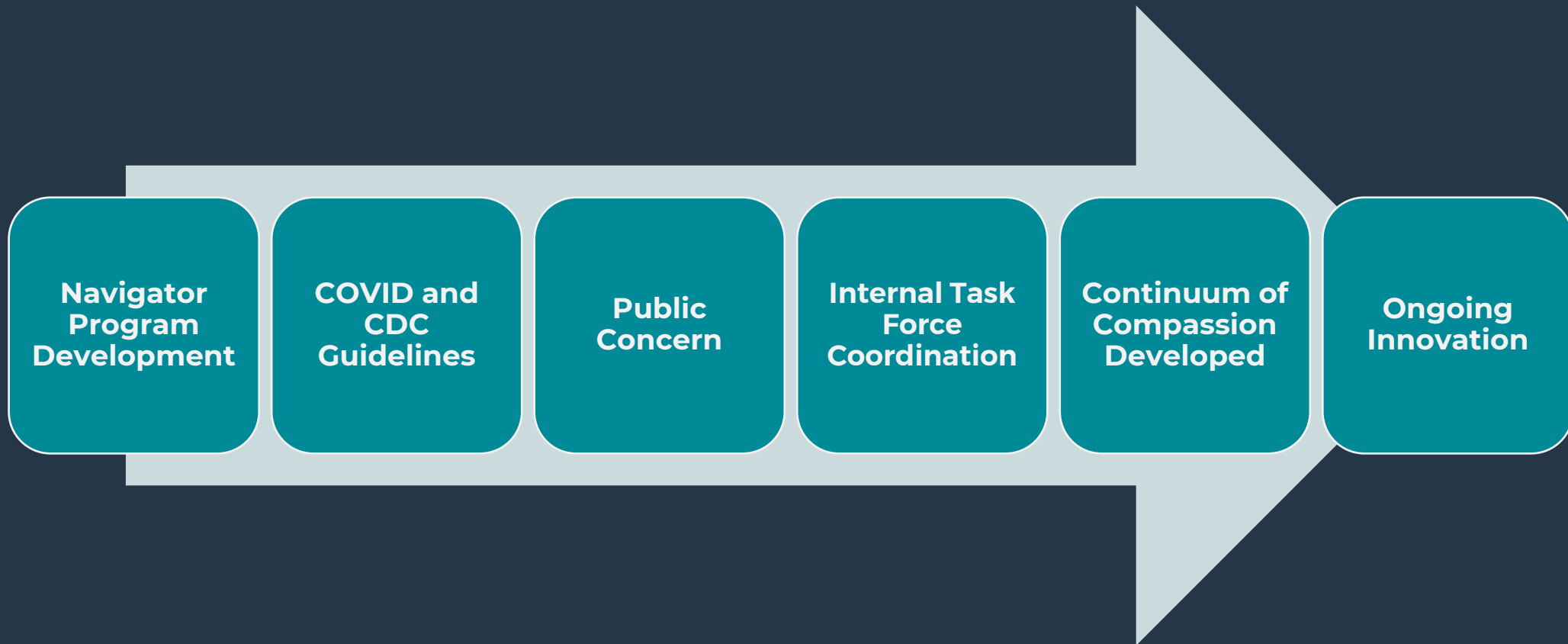


Homeless Navigators

- Housing Navigation
- Benefit Navigation
- Vital Documents
- Immediate Needs
- Resource Referrals

PARTNER UP!

From Ideas to Implementation



Moving from Field Innovation to Leadership Approval

- Establish clear role responsibilities
- Develop a strong communication strategy
- Create strong internal alliances
- Seek input from ALL voices in the community

2025 Program Outcomes



87 Total Camps Identified
(5 Criminal Trespasses and 8 Arrests)



Decreased Instances of Criminal Enforcement Measures



Increased Value in Relationships Build with Community



Permanently Housed 23 people



Placed 18 people in temporary residential programs



QUESTIONS? COMMENTS? FEEDBACK?

Thank you!

Haley Stephenson- hstephen@westminsterco.gov

Lauren O'Neill- loneill@westminsterco.gov